



**Dr Geetanjali's**  
Health Care Center  
॥ आरोग्यम् धनसंपदा ॥

# DGHC Central laboratory

Empowering Pharma Innovation with  
Precision Diagnostics

All rights reserved | DGHC

# ABOUT US

DGHC Central Lab is a NABL-accredited, state-of-the-art reference laboratory delivering comprehensive diagnostic solutions exclusively tailored for the pharmaceutical and biotechnology sectors. We specialize in clinical trial support, precision-driven testing, and protocol-compliant reporting that ensures data integrity and accelerates therapeutic timelines.

## At a Glance:

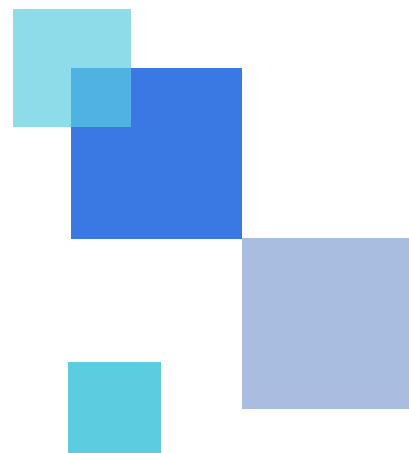
- Over 396+ Clinical Trials Supported
- 500+ Validated Test Offerings
- 100 + ELISA Tests
- Global Sample Reach & tracking mechanism





# OUR CAPABILITIES

- Real-Time Reporting via LIS Portal
  - Robust Quality Management System
  - Protocol-Adherent Sample Processing
  - Custom Assay & Panel Development
  - Stability and Toxicology Testing
  - Regulatory-Ready Data Standardization
  - Subject and Visit Specific Sample Collection
  - Inventory for Safety and Immunogenicity samples
  - Sample Collection Shipment to the sites from Central Lab
  - Study Specific Laboratory Manual and Test Requisition forms
  - Sample logistics from Sites to Central Laboratory at 2-8 degree and Frozen -80 degree Shipments through network logistics channel partners
  - Frozen in-house Sample Storage facility
  - Electronic data management and transfer as per EDC and DTG
  - precision-driven testing, and protocol-compliant reporting that ensures data integrity and accelerates therapeutic timelines.
- 



# OUR OFFERINGS

## Specialized Testing Capabilities

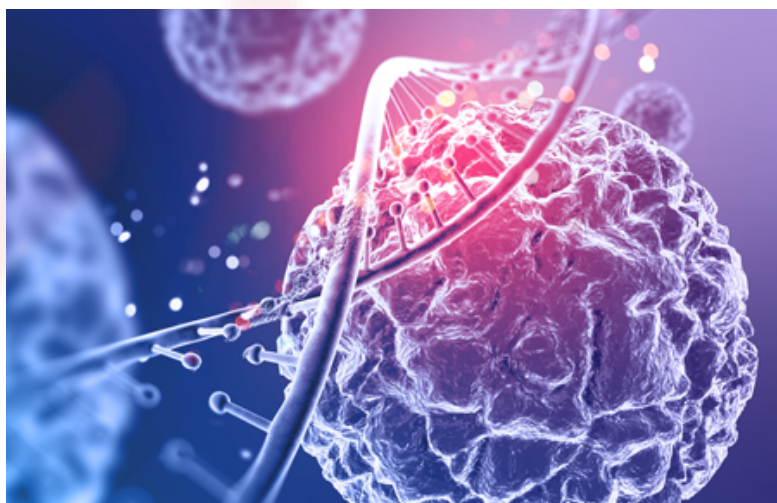
- Molecular Diagnostics (RT-PCR, qPCR, NGS)
- Immunoassays (ELISA, CLIA)
- Clinical Chemistry & Hematology
- Histopathology & Cytopathology
- Biomarker Discovery & Validation

## Therapeutic Expertise

- Oncology
- Neurology
- Infectious Diseases
- Cardiology
- Rare Genetic Disorders

## Support for Pharma Research

- Protocol-Adherent Sample Processing
- Custom Assay & Panel Development
- Biomarker & Target Identification
- Stability and Toxicology Testing
- Regulatory-Ready Data  
Standardization





# WHY PARTNER WITH DGHC?



## **Global Logistics Support**

Timely pickup and cold-chain maintained transportation from across the globe.



## **Real-Time Reporting Portal**

Seamless access to reports via secure LIS – customizable to client needs.



## **Regulatory Compliance**

We follow strict protocols, ensure data integrity, and align with global standards like ICH-GCP.



## **Scalable Infrastructure**

From pilot studies to multi-site drug trials – we scale as per your study requirements



## **Dedicated Project Management**

Single-point contact for coordination, updates, and quality assurance.

## OUR TECH PARTNERS

At DGHC, we rely on industry-leading diagnostic technologies and platforms to ensure reliable, high-throughput, and reproducible results.

The logo for ThermoFisher Scientific, featuring the company name in a sans-serif font. 'ThermoFisher' is in a larger, bold font, and 'SCIENTIFIC' is in a smaller, all-caps font below it. The logo is set against a light blue circular background.

**ThermoFisher**  
SCIENTIFIC

The logo for Roche Diagnostics, featuring the word 'Roche' in a blue serif font inside a blue hexagonal border. Below it, the word 'Diagnostics' is written in a smaller, italicized serif font. The logo is set against a light blue circular background.

**Roche**  
*Diagnostics*

The logo for Siemens Healthineers, featuring an orange globe icon with white grid lines. Below the icon, the words 'SIEMENS' and 'Healthineers' are written in a sans-serif font. 'SIEMENS' is in blue and 'Healthineers' is in orange. The logo is set against a light blue circular background.

**SIEMENS**  
Healthineers

The logo for Illumina, featuring the word 'illumina' in a lowercase sans-serif font. The 'i' is orange and the rest of the letters are grey. A registered trademark symbol (®) is at the end. The logo is set against a light blue circular background.

**illumina**®

The logo for Abbott, featuring a stylized blue 'A' icon above the word 'Abbott' in a bold, black sans-serif font. The logo is set against a light blue circular background.

**Abbott**



# LET'S COLLABORATE


YOUR DIAGNOSTICS PARTNER IN RESEARCH EXCELLENCE

## CONTACT US

 +91-8120568789

 abhishek.dhakad@geetanjalidiagnostics.com

 <https://www.drgeetanjalihealthcare.com/>

 Krushna Park, Shop No. 1, Wing "B", Kharadi Bypass Road,  
Kharadi, Pune - 411014